

# Bythams Primary School Profile

Published 27 June 2008



## Bythams Primary School

Creeton Road, Little Bytham  
Grantham, Lincolnshire, NG33 4PX  
Telephone: 01780 410275  
<http://www.bythams-school.co.uk>

Children's Service Authority:	Lincolnshire
Age range:	4-11
Number of pupils:	90
Head teacher:	James Shawley
Chair of governors:	Paul Livingston

## What have been our successes this year?

**OfSTED:** The Bythams hosted a full OfSTED inspection in October 2007. The summary of the excellent report can be found below. Very few schools as small as the Bythams are formally rated by OfSTED as providing good value-for-money and this is great achievement for the whole school team.

**Academic:** 2007/8 has seen continued achievement. We had excellent pass rates in all Key Stage 2 subjects and we are continuing to improve results in all areas of the school.

**Pastoral:** The children continue to thrive in a superb environment within a small school which has a strong family atmosphere.

**Facilities:** Through careful financial management and the help of the Friends of Bythams School(FoBS), several key improvements have been made this year including:

- An allotment area for growing vegetables and fruit
- Continued investment in ICT
- Materials to support the creative curriculum

**Community:** Our strong links with the villages that surround the school and other local schools in our area enhance and improve the range of services we offer from our base.

**Sports:** For such a small school, we do very well in the sporting arena, with substantial successes in inter-school tournaments in football, netball & tag rugby (county finalists).

---

## What are we trying to improve?

We have a philosophy of continuous improvement and constantly review our performance both internally and with the help of our independent Schools Improvement Partner. Governors are all assigned various subject areas and also carry out observations to ensure the curriculum is being delivered effectively.

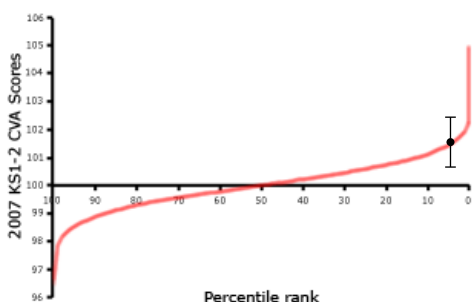
The recent Ofsted asked to improve our already extremely good maths provision to match the exceptional standards of our English and Science provision. We have a set of plans in place to achieve this goal as part of our School Development Plan.

From September 2008 we will be implementing fully the creative curriculum which allows a better interaction across the subjects in the curriculum.

We have continued to use phonics groups, which were successful in raising spelling standards and have invested in additional literacy resources.

---

## How much progress do pupils make between age 7 and 11?



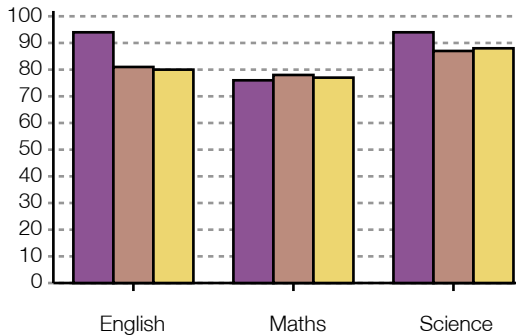
- Our school
- I Confidence interval

The chart shows our school's contextual value added (CVA) score relative to that of other primary schools. CVA is a statistical means of assessing how effective a school is, by measuring pupils' progress using their test and examination results. The confidence interval shows the range within which we can be confident the score (calculated on the results of only one year group) represents the overall effectiveness of a school. The percentile rank shows the percentage of schools with a score equal to or higher than ours.

This graph shows that The Bythams School is within the top 5% of schools across the country for our 2007 results. This charts the value added (improvement in attainment) made from Y2 SATs to Y6 SATs for one cohort of children. This is a higher figure than we achieved in 2006. Within Lincolnshire we are one of the top three schools and within the top 200 across England and Wales for achieving above age group expectations.

---

## How well do pupils achieve at age 11?



This chart shows the Key Stage 2 results for 2007. It indicates the percentage of pupils eligible for KS2 tests (usually 11 year olds) who achieved or exceeded the expected level (level 4)

■ Our school ■ Local schools (Local Authority) ■ All schools

---

## How have our results changed over time?

It is very difficult in a small school to measure year on year improvements by statistics when one pupil can be 15% of the class. Therefore, in small schools attainment results vary considerably from year to year.

For English the school has consistently good results in Reading. Writing results had not been so strong in both Key Stage 1 and Key Stage 2, but have improved during the last 12 months with the additional focus put on this area.

Mathematics has, as highlighted by Ofsted, been weaker than both Science and English, but with the new strategies in place, we found that 2007 Maths results were considerably higher than before with the majority of children achieving the highest competency level in Key Stage 2.

Our Science results remain consistently excellent.

## **How are we making sure that every child gets teaching to meet their individual needs?**

Our teachers plan lessons to cover all abilities, ensuring every child can achieve in class and make improvements appropriate to their ability. We track *individual child* progress constantly, identifying areas of concern early and creating intervention strategies to correct problems.

We support Special Needs children by using Teaching Assistants and run extension groups for Gifted and Talented pupils. The school runs a SATs club after school in the early spring term to help the children's achievements reflect their true abilities when these annual tests come around. The school has ensured the environment is stimulating and children are encouraged to investigate their interests. A dedicated ICT suite allows them to use the internet to research projects and work under the guidance of highly skilled staff.

Our pupil tracking system contributes to children achieving their full potential during their time at the Bythams.

---

## **How are we working with parents and the community?**

A key component of the school life is the '*Friends of Bythams School*' (FoBS), which runs many events and supports the school. The school is central to a community covering six parishes and we work closely with many organisations who play a pivotal role in our area such as the church, playgroups, other schools and notably the Bythams Woodland Trust which administers and runs *The Spinney*, a community woodland resource area with a special focus for children.

The school maintains close links with the local churches (Castle Bytham, Little Bytham, Careby, Holywell & Aunby, Creeton and Couthorpe) and participates in several church and village events each year.

Parent communications are frequent, including formal parent evenings, individual reports, open days, special events and an annual Parents' Briefing on school development.

Parents are able to register for email delivery of school letters, forms etc, as well as gaining news and information from the school website.

To keep the wider community informed, we publish a monthly column in the local village newspapers "The Glenside News" and "The Three Towers". For significant events we regularly receive coverage in the Stamford & Rutland Mercury.

## What have pupils told us about the school, and what have we done as a result?

We have a fully functioning School Council with two pupils elected by their peers from each class. It carries out surveys, discusses issues and makes presentations regularly to the Staff and Governors.

The School Council is involved in selection of staff, where it forms a part of our interview process and contributes to the formal evaluation of candidates.

Our older children work with our younger ones to design changes to the Key Stage 1 playground and were involved in the selection of the contractor to perform the work. They have also designed play equipment that will be used to underpin grant applications for *The Spinney* (e.g. from the Lottery Fund).

The pupils were consulted regarding refurbishment of toilet areas and we have changed and added some of the after school clubs to reflect requests from pupils.

---

## How do we make sure our pupils are healthy, safe and well-supported?

Our pastoral care is first class and a great strength. We are a Healthy Living School offering milk and fruit daily to all our pupils. The Friend of Bythams School (FoBS) provides children with a Friday breaktime milkshake or hot chocolate every week.

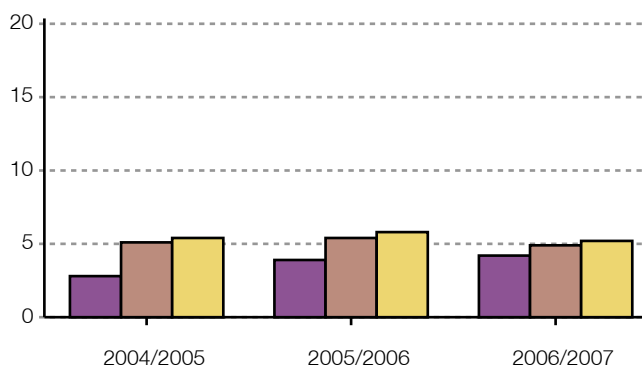
With multiple after school sports clubs and a partnership for sports with other schools such as Witham Hall we have an emphasis on exercise. The school is set in an idyllic countryside environment with few of the dangers faced by many other schools. The school is completely secure with access control and a system for checking and controlling all visitors.

Most pupils travel by school bus and a "bus buddy" system ensures younger pupils are cared for whilst building citizenship skills in the older children.

Several parents volunteer in classroom support roles and together with Teaching Assistants we have an enviable adult / child ratio due to our small class sizes.

---

## How do our absence rates compare with other schools?



This chart shows the percentage of half days missed through authorised and unauthorised absence by all pupils at the school. Information is given for the school, for schools within the local authority and for all schools.

■ Our school ■ Local schools (Local Authority) ■ All schools

There were no unauthorised absences last year. Nearly all authorised absences are the result of children being taken out of school for family reasons during term time. This is a trend that has increased with the current financial pressures on families and Governors are keeping a close eye on progress.

---

## **What activities and options are available to pupils?**

A wide range of free extra curricular activities are offered to appropriate age pupils. School clubs include:

- SATS practice
- arts
- football
- netball
- tag rugby
- rounders
- gardening
- ball skills
- music
- drama
- recorder

Additionally, through various partners we are able to offer woodwind, strings, piano / keyboard and French tuition, though these are subject to charges.

The mobile library visits monthly to allow children to select their own choice of

books while the dedicated ICT suite can be used by older children for independent research as they

each have their own log-in details.

Through the Learning Network, children in Years 4 and 5 have been able to visit other schools and take part in Maths Challenges.

We make good use of The Spinney for outdoor learning experiences. Children in year 5 and 6 go on an

outward bound trip for a week each year.

---

---

## **What do our pupils do after leaving this school?**

Our pupils are able to apply to a wide range of schools. At the end of school year 2007/08, our current year 6 students will join schools in Stamford, Bourne, Grantham and Corby Glen .

Children leave with self-confidence, good manners and outstanding skills to enable them to tackle the next stage of their education. They are well-rounded, caring and productive, having experienced the close-knit family atmosphere at The Bythams.

---

---

## **Ofsted's view of our school**

This is a good school with some outstanding features. Inspection findings fully endorse the school's view of its own effectiveness. Parents are very supportive and appreciative of the quality of education the school provides. One parent's comment, echoed by others was, 'A terrific school that I would recommend to anyone!' At the core of the school's success is the leadership of the headteacher, which has brought about improvements in standards, achievement and the quality of learning. This track record indicates that the school is well set for continued improvement and provides good value for money.

Attainment when pupils start school is broadly in line with national expectations. By the time that they leave, standards are well above average and the Year 6 pupils' overall performance in 2007 was exceptionally good although standards in mathematics were not as strong as English and science. This is because pupils' problem solving and investigative skills are not as well developed as other aspects of their mathematics work. The good progress and achievement of pupils of all abilities owe much to the good quality of teaching which challenges, motivates and enthuses pupils in equal measure. Equally good assessment procedures mean that staff have a good grasp of how well pupils are doing and use the information to set challenging targets, to match work to pupils' needs and to provide additional support when needed.

Pupils' personal development is outstanding. Behaviour is never less than good and, for some pupils, it is excellent. Pupils thoroughly enjoy school and attendance rates are consistently very high. Pupils' knowledge of keeping fit and managing risk in their lives is good and the maturity and sense of responsibility of pupils is highlighted by the outstanding contribution they make to the community. There is little doubt that pupils' experiences and acquisition of key skills prepare them well for their future lives. The good curriculum on offer meets pupils' academic and social needs well and the wide variety of enrichment opportunities readily contributes to pupils' enjoyment. Care and guidance are good with aspects that are outstanding. Staff show high levels of commitment to encouraging pupils' enjoyment and achievement and are very effective in providing a safe, caring and supportive environment where pupils flourish. Pupils are helped to make good progress by being kept well informed about how they are doing and in setting and reviewing their own targets.

Leadership and management, including governance, are good. The headteacher provides strong and effective leadership, which is firmly focused on promoting the well-being of learners through the provision of a good quality of education. All staff work together very well to make this a reality. This is not a school that rests on its laurels but instead sets the bar higher in its push to move on to the next level. Part of this is the need for subject leaders to play a more proactive role in monitoring teaching, learning and standards, which at present is not robust enough.

Date of last inspection: 17-Sep-2007

Ofsted graded our school as good

Inspectors made judgements on a scale: outstanding (grade 1); good (2); satisfactory (3); inadequate (4).



[View the Ofsted page for Bythams Primary School](#)

---

---

## What have we done in response to Ofsted?

By the time of our recent Ofsted report, we had carried out all the actions from the school development plan that had been created from our previous Ofsted in 2003.

The main area highlighted for improvement was in the area of Mathematics. The Governors and Staff have created an updated School Development Plan with key actions identified and already being carried out to ensure that our Maths standards are as exceptional as our English and Science provision.

We have also established, in partnership with other local schools, an outstanding range of extended schools provision, particularly in regard to holiday activity clubs.

---

---

## More Information

If you would like more information about school policies, including our policies on special educational needs and disability, admissions, finance, school food and our complaints procedure, please contact us:

By telephone 01780 410275

Our website <http://www.bythams-school.co.uk>